

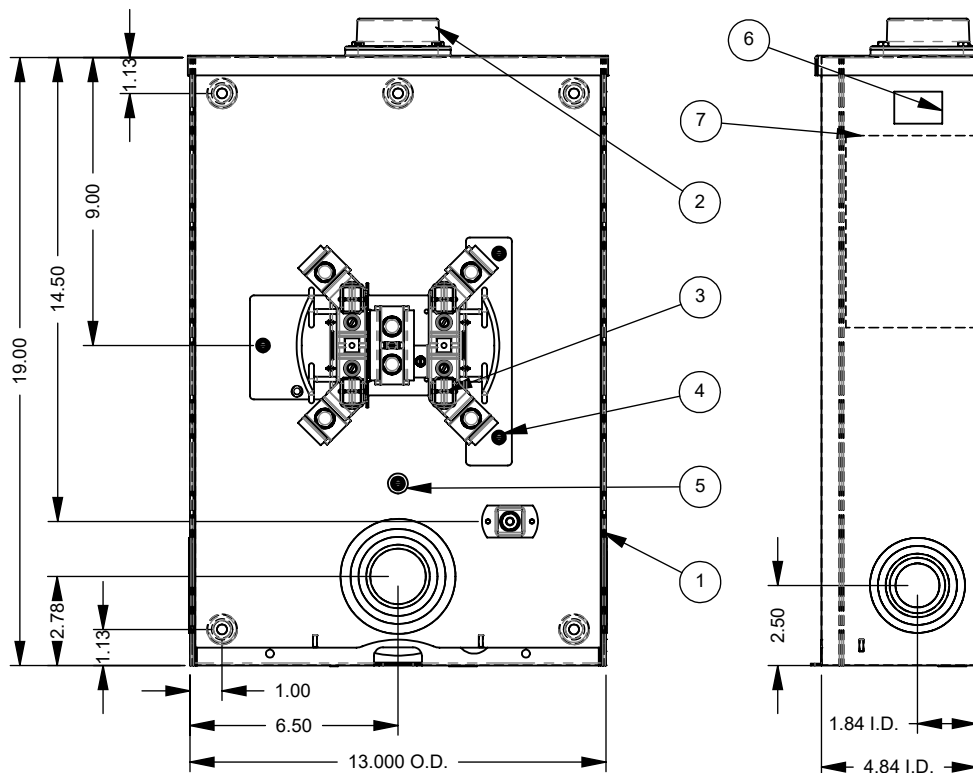
CATALOG NUMBER PREFIX	
PREFIX	DESCRIPTION
S	16 GA. STEEL PAINTED SHELL, NON-U/L LABELING
U	16 GA. STEEL PAINTED SHELL, U/L LABELING

SUFFIX	SMALL HUB TYPE	HUB / SCREWS
-O	NO OPENING	NONE
-RL	HUB OPENING	NONE
-XL	CLOSING PLATE (A7551)	1028222
-WL	1" (A7514)	1028195 / 1156422 (4)
-YL	1 1/4" (A7515)	1000006 / 1156422 (4)
-ZL	1 1/2" (A7516)	1003422 / 1156422 (4)
-DL	2" (A7517)	1000007 / 1156422 (4)
-EL	2 1/2" (A7518)	1028196 / 1156422 (4)

SUFFIX	B&B ASS'Y ITEM #4
NONE	#1023710
-TG	#1001866
-KK	#1023717
-TG-KK	#1008377
-QG-KK	#1136888


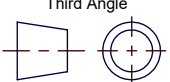
SUFFIX	FRONT ASS'Y ITEM #3
NONE	#1001181
-PL	#903207-SC

ITEM	QTY.	PART NUMBER	DESCRIPTION
1	1	(SEE CHART)	SHELL WELDMENT
2	1	(SEE CHART)	HUB UNIT AS SPECIFIED
3	1	(SEE CHART)	BRIDGE & BLOCK ASS'Y
4	4	1000183	SCREW 12-24 x 5/16
5	1	1000042	WASHER, 1/4" FLAT SAE
6	1	1000166	LABEL WHEN SOLD AS U/L (LOC. B)
7	1	1135009	LABEL, SERIES U-200
8	1	1000064	LABEL, DANGER
9	1	1000158	PAD WIREMAN, 8.37 x 7.50
10	1	1001276	CARTON (NOT SHOWN)



- NOTES:
 1. FOR LABELING LOC. SEE DWG: #1096668.
 2. FOR FIELD INSTALLED FIFTH TERM. ASS'Y ORDER CAT. #K5T.

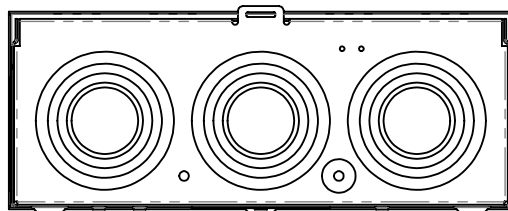
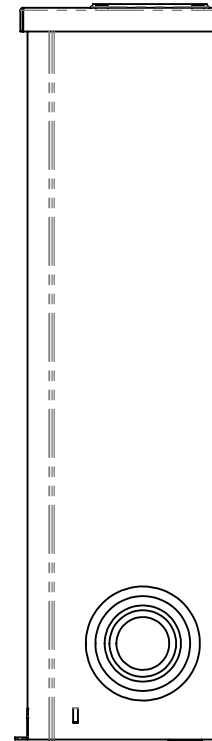
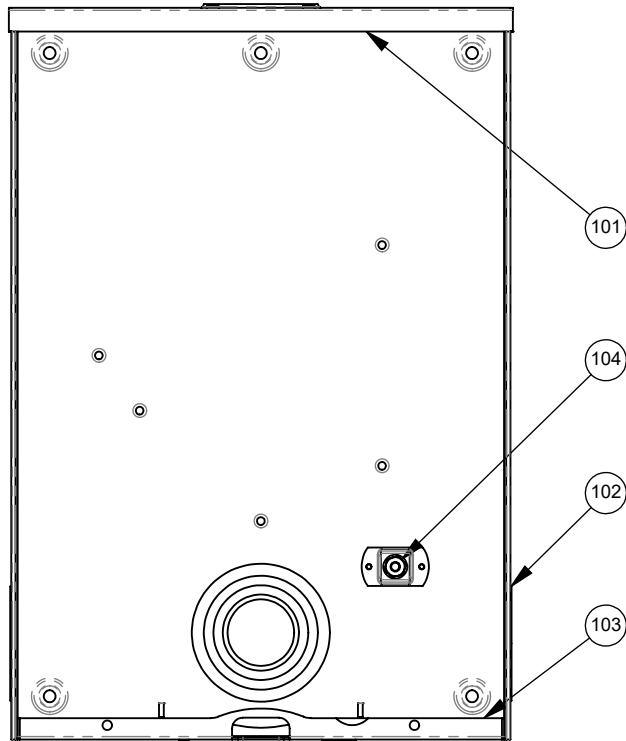
SEE SHEET X FOR SHELL WELDMENT DETAIL

Material:	16 GA. STEEL	 <p>KANSAS CITY, MO USA</p>
Shear/Die No.:		
Finish:	MILBANK LIGHT GRAY	Title: 200A 4-TERM RINGLESS 350 kcmil METER SOCKET
Part Wt.:		
Paint Qty.:		Catalog No.: (SEE CHART)
Tolerances:		
Unless Specified Otherwise X.X ±.1 X.XX ±.03 X.XXX ±.015 X* ±2*	Third Angle 	Customer: MILBANK STANDARD
Scale:	NTS	Drawing No.: 3914
Checked By:		Date: 11/26/14
Approved By:		Sheet: 1 of 2


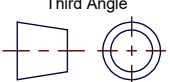
REV.	DATE	DESCRIPTION	ECO No.	BY
J5	10/6/17	-WSE LABEL TO BE PLACED ON BOTTOM LEFT OR FRT.	037426	KSP
J6	4-9-18	REM -WSE LABEL NOTE	038603	RRO
J7	04/30/19	UPDATE DWG ASS'Y., BRIDGE MTG HOLE CHANGES	041669	CAR

CAT. NO.	TOP ITEM #101	SHELL WELDMENT ITEM #1
PREFIX 3914-O	#1001095	#1124912
PREFIX 3914-()	#1001811	#1124913

ITEM	QTY.	PART NUMBER	DESCRIPTION
101	1	(SEE CHART)	TOP "S2"
102	1	1001103	BACK "S2"
103	1	1001108	BOTTOM
104	1	1001180	WELD-IN GROUND STUD



SEE DRAWING 1167313 FOR MILBANK WELDING GUIDELINES.

Material:	16 GA. GALV. STEEL		 MILBANK ENERGY AT WORK KANSAS CITY, MO USA
Shear/Die No.:			
Finish:	MILBANK LIGHT GRAY		Title: SHELL WELDMENT
Part Wt.:	9.798	LBS. EA.	
Paint Qty.:		GRAMS	Catalog No.:
Tolerances:		Third Angle 	Customer:
Unless Specified Otherwise			Drawing No.: 3914
X.X	±.1		
X.XX	±.03		
X.XXX	±.015		
X"	±2"	Scale: NTS	Checked By:
Drawn By: QN	Approved By:	Date: 11/26/14	Sheet: 2 of 2

REV.	DATE	DESCRIPTION	ECO No.	BY
J5	10/6/17	-WSE LABEL TO BE PLACED ON BOTTOM LEFT OR FRT.	037426	KSP
J6	4-9-18	REM -WSE LABEL NOTE	038603	RRO
J7	04/30/19	UPDATE DWG ASS'Y., BRIDGE MTG HOLE CHANGES	041669	CAR